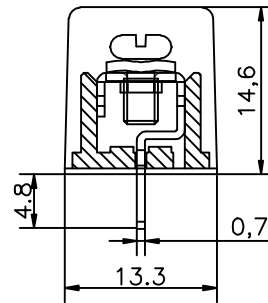
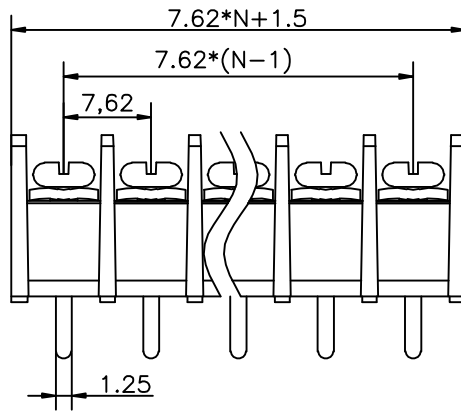
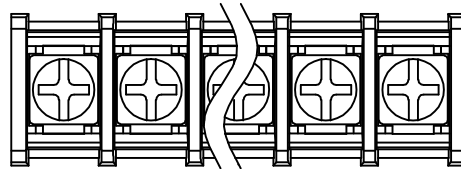


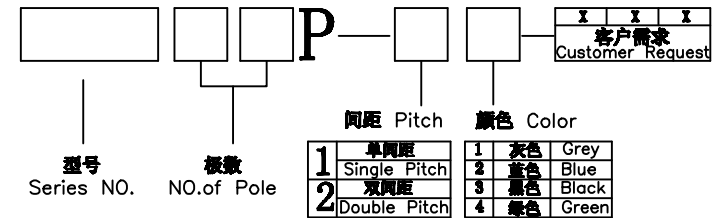
RoHS Compliant Customer Drawing

REV.	ECN NO.	DESCRIPTION	DATE	DESIGN

- 材质及电镀(Material)
 塑件(Housing): PA66, UL94V-0
 端子(Terminal): 黄铜, 0.7; 镀锡(Brass, Tin Plated)
 螺丝(Screw): M3, 钢, 镀锌(Steel, Ni-Plated)
- 电气性能(Electrical)
 额定电压(Rated Voltage): 300V
 额定电流(Rated Current): 20A
 绝缘电阻(Insulation Resistance): 500MΩ/DC500V
 耐电压(Withstanding Voltage): AC2000V/Min
- 机械性能(Mechanical)
 温度范围(Temperature Range): -40℃~+105℃
 适用线径(Wire Range): 22-14AWG
 最大扭矩值(Max. Torque Value): 0.5N.m 4.4Lb.in



订购方式/HOW TO ORDER



CONTACT WITH US:
 TEL: +86-574-63505128 FAX: +86-574-63532183
 E-Mail: sales@nbmax.com.cn Website: www.nbmax.com.cn

N=No. of contacts

公差一览表				宁波迈科思电子科技有限公司					
TOLERANCE UNLESS OTHERWISE				NINGBO MKX ELECTRONIC TECHNOLOGY CO.,LTD					
X.	±0.25	X°.	±5°	单位 UNITS	mm	制图 DRAWING	陈冬梅	产品名称 TITLE	MX25C-7.62
.X	±0.20	.X°.	±2°	角法 VIEW	⊕ ⊖	设计 DESIGN	顾兴伟	产品料号 PART NO.	MX25C-7.62
.XX	±0.15	.XX°.	±1°	比例 SCALES	1:1	审核 CHECK		图号 DRAW NO.	MX25C-7.62-0A
.XXX	±0.02	.XXX°.	±0.5°	日期 DATE	2012.07.10	版本 VER	A0	核准 APPD	